

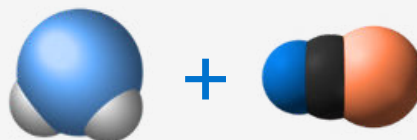
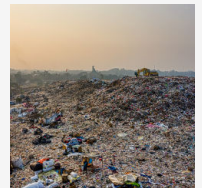


Model 800

The KECO Model 800 Analyzer provides real-time, accurate measurement of Total Sulfur and H₂S in gas streams with unmatched selectivity. Its dual-function, interference-free detection system ensures precise results from ppb to percent levels, supporting safe, efficient, and compliant operations with minimal maintenance.

Applications

- Sulfur Analysis in Ammonia
- Fuel Cell Protection
- Sales Gas Monitoring
- Sulfur in Synthesis Gas
- Landfills
- Chemical Plants
- Food & Beverage Plants
- Refineries
- Liquid Petroleum Gas (LPG)
- Liquid Natural Gas (LNG)
- Environmental Monitoring



Benefits

- Dual H₂S and Total Sulfur detection
- Wide range: ppb to 100% levels
- ASTM-approved tape ensures high accuracy
- Low maintenance, minimal consumables required
- Hazardous-area certified for safe use

Operational Impact

- Enables real-time sulfur balancing decisions
- Reduces chemical overdosing in treatment
- Improves environmental compliance confidence
- Cuts need for manual sample testing
- Reduces poisoning of the catalyst



Scan to know
more about
KECO Model 800



Specifications

DISPLAY

- Alpha Numeric LCD
- 128 x 64 pixel
- Back-lit display (optional)
- LCD Graph Display w/ month of data (optional)

TEMPERATURE RANGES

- neg. -10°C to 50°C (operating)
- 0°C to 70°C (storage)

ANALOG

- 4-20mA Isolated

ANALYTICAL PERFORMANCE

- Resolution: 10-50 ppb
- Accuracy: $\pm 2\%$
- Repeatability: $\pm 1\%$
- Linearity: $\pm 1\%$
- Drift: Nil
- Temp. Coefficient: 0.01% / °C
- Analysis time: 0.75 Second (initial response)

DETECTION RANGES

- 0-1 ppm by wt.
- 0-10 ppm by wt.
- 0-50 ppm by wt.
- 0-100 ppm by wt.
- 0-500 ppm by wt.
- Percent ranges
- Customer specified (contact factory)

SAMPLING SYSTEM (STANDARD)

- Sample Pressure Regulator
- Sample Flow Meter
- Secondary particulate filter
- Fast sweep (fast loop) needle valve

ENCLOSURE (CABINET)

- High-impact, industrial strength fiberglass
- NEMA 4X / IP 65 options

WEIGHT/DIMENSIONS

- ~200 lbs. w/o options
- 30" W x 50" H x 12" D (Series 1800-150)

UTILITIES/SETTINGS

- 110VAC or 220VAC
- ~1 KWatt
- Hydrogen: 100 ml/min
- Sample flow: 0.3 SCFH
- Sample pressure: 10 psig constant
- Calibration gas: H₂S ~25% of scale balance N₂, 2L per cal

AREA CLASSIFICATIONS

- Class 1 Division 2

AVAILABLE OPTIONS

- Concentration relay alarms
- Diagnostic/fault relay alarms
- Low flow relay alarms
- RS-232/485 Modbus
- Data Logger for data download to PC
- Remote monitoring/control with PC
- Automatic calibration
- H₂S Scrubber (for vent)
- Fugitive Emission Control Unit (for vent)
- Sample Probe
- Sampling System for gas contaminated with liquids
- Sampling System for LNG/LPG (Vaporizing Regulator)

KECO provides design and application engineering assistance for the User's analyzer requirements. For a quotation, please complete Analyzer Quote Request Form at kecosystems.com/quote

KECO reserves the right to make revisions and or changes without notice. KECO shall not be liable for any errors or omissions made or any damages resulting from the use of the analyzer, information, or the manual. © 2025 Printed in the USA.